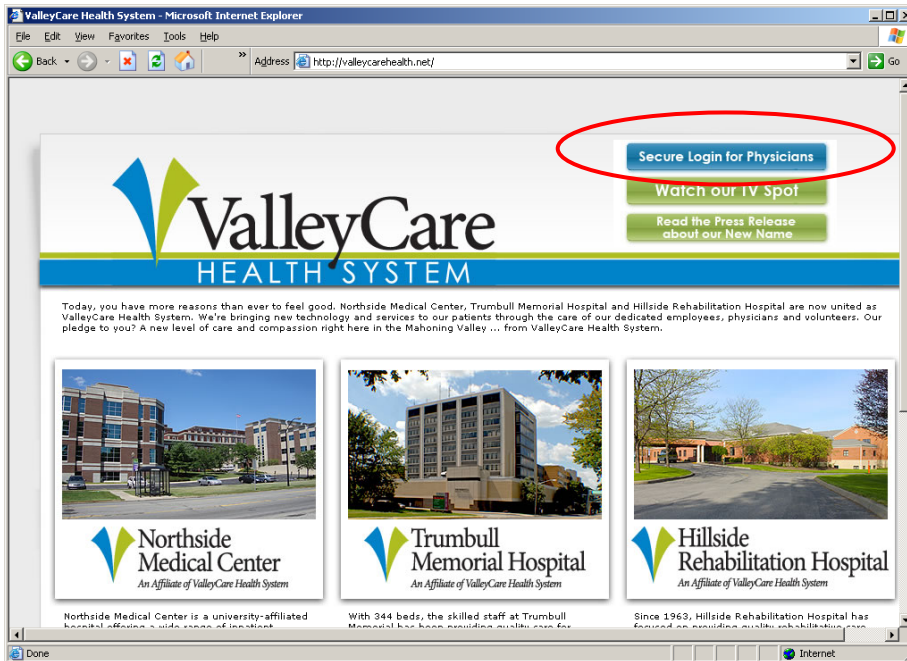




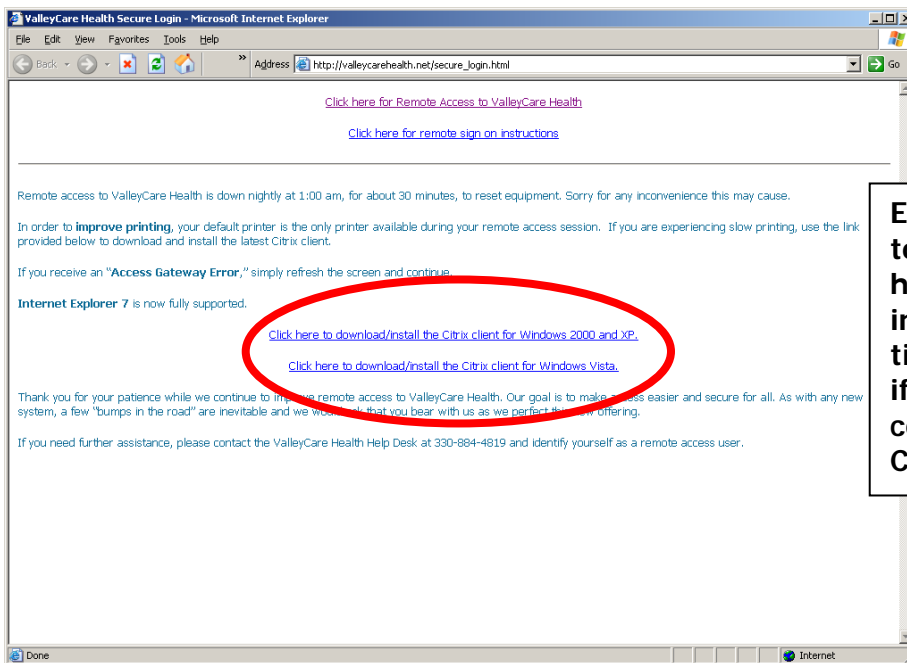
## SIGN-ON INSTRUCTIONS FOR REMOTE ACCESS:

Access the Forum Health web page using <http://ValleyCareHealth.net>.

Click on the **Secure Login for Physicians** link.

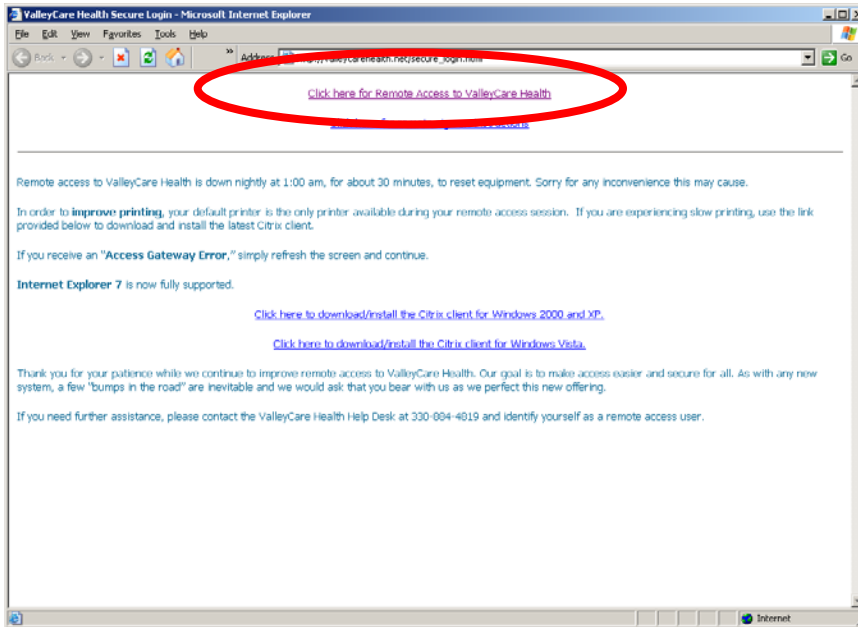


If this is the **first time** logging in remotely, please install the Citrix Client. This only needs to be done the first time you log in. After this is done for all subsequent login's, proceed to the next page.

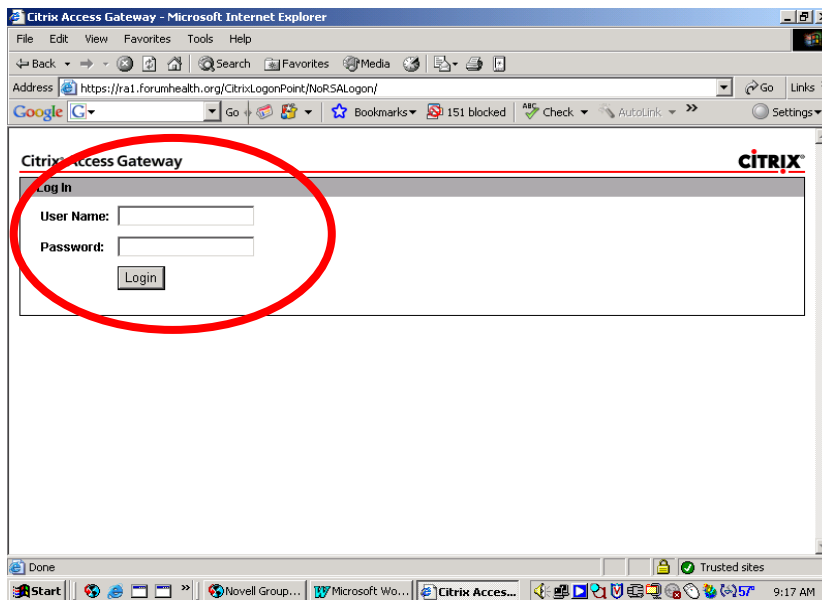


Each computer you will use to access remotely must have the Citrix Client installed. If this is the first time accessing remotely, or if you are using a new computer, install the Citrix Client.

Select **Click here for Remote Access to ValleyCare Health.**

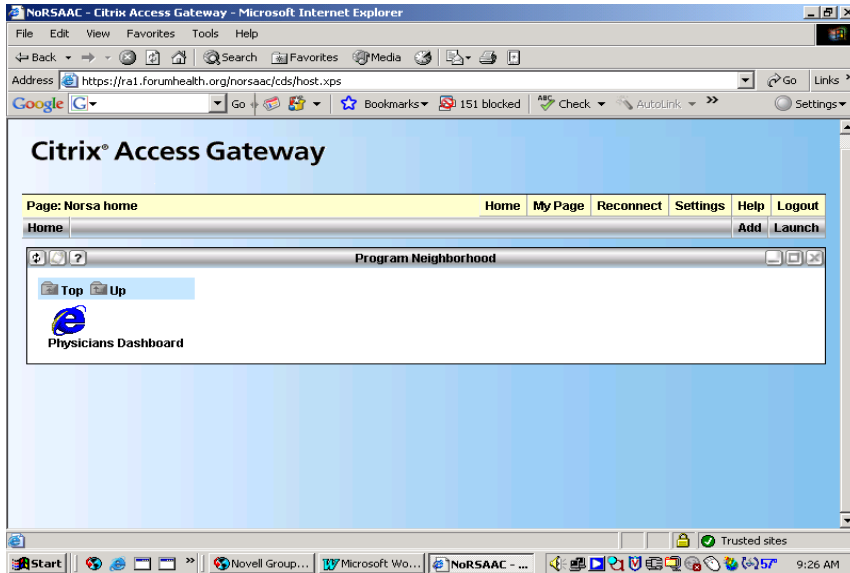


The Citrix Access Gateway log-in screen will appear.



- Enter your Username in the **User Name** box (User Name is **your** Network account).  
**Note** – For physicians your network account is a **p** followed by your doctor number, i.e. **P123456**
- Enter your Network password in the **Password** box.  
**Note** – If you previously did not have a network password, enter **FHRemote** (case Sensitive) as your network password in the **Password** box.
- Click on **Login**.

Citrix will configure your login and the **Citrix Access Gateway** screen will appear.



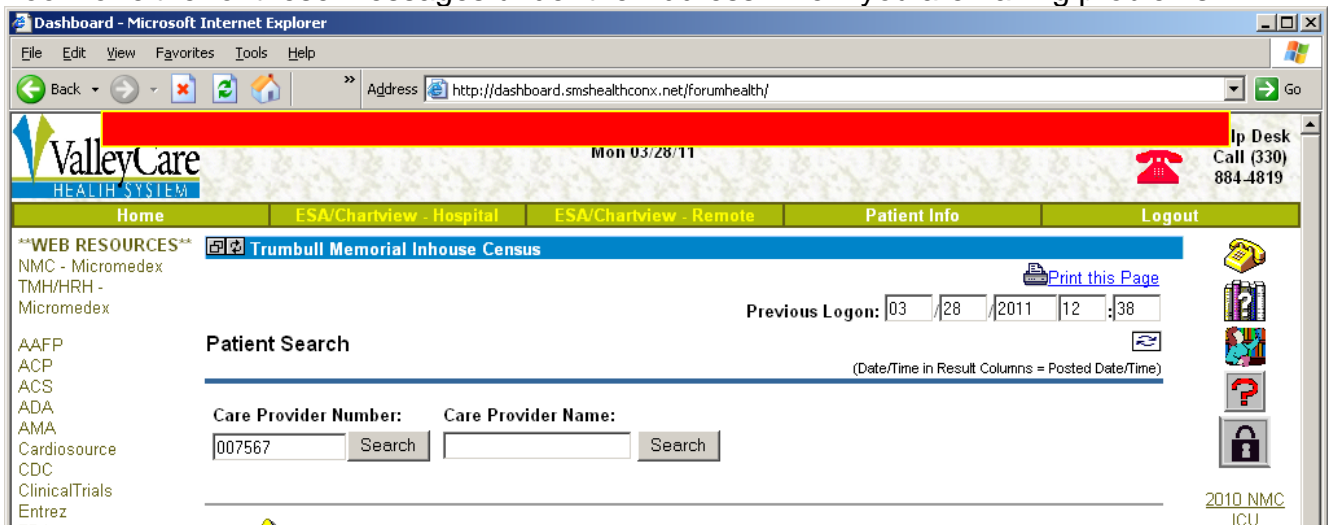
Double-click on the **Physician Dashboard icon** to open the application. You can now login and proceed with the application as you normally do.

### TROUBLESHOOTING:

**ActiveX Controls:** These are objects that are like small programs or "applets" and a number of Microsoft programs like Office and Internet Explorer (IE) are designed to be able to interact with them. You may be prompted to run these.

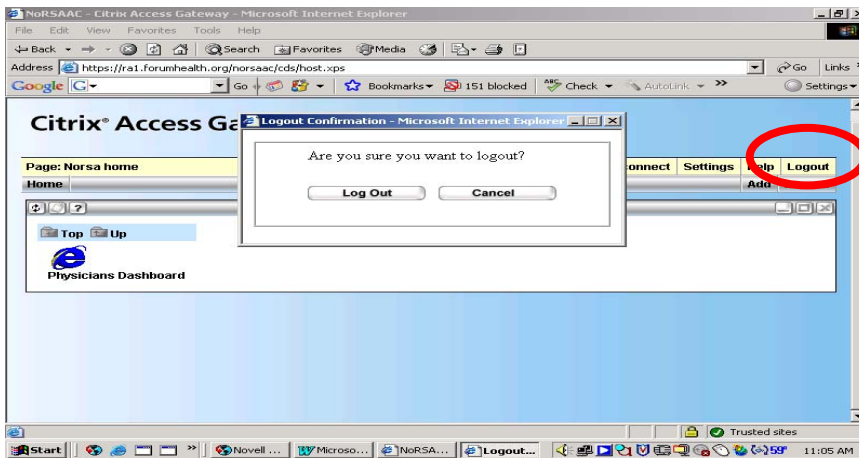
**Pop-Up Blockers:** Pop-ups are needed to view PACS images. You should "allow" pop-up from this site.

Look for either of these messages under the Address Line if you are having problems.



### CLOSING INSTRUCTIONS:

- **Logout** of Physician Dashboard and you will be back at the Physician Dashboard login screen.
- Click on the **X** in the top right hand corner. You will be back at the **Citrix Access Gateway** screen.
- Click on the **LOGOUT** button and another window will open asking “**Are you sure you want to log out?**”. Click on **LOG OUT**.



- Another window will open stating: **YOU HAVE LOGGED OUT SUCCESSFULLY. CLICK OK TO CLOSE THIS BROWSER WINDOW**, click on **OK**.